


Beck

TOGETHER WE BUILD
DATA CENTRES

BIM

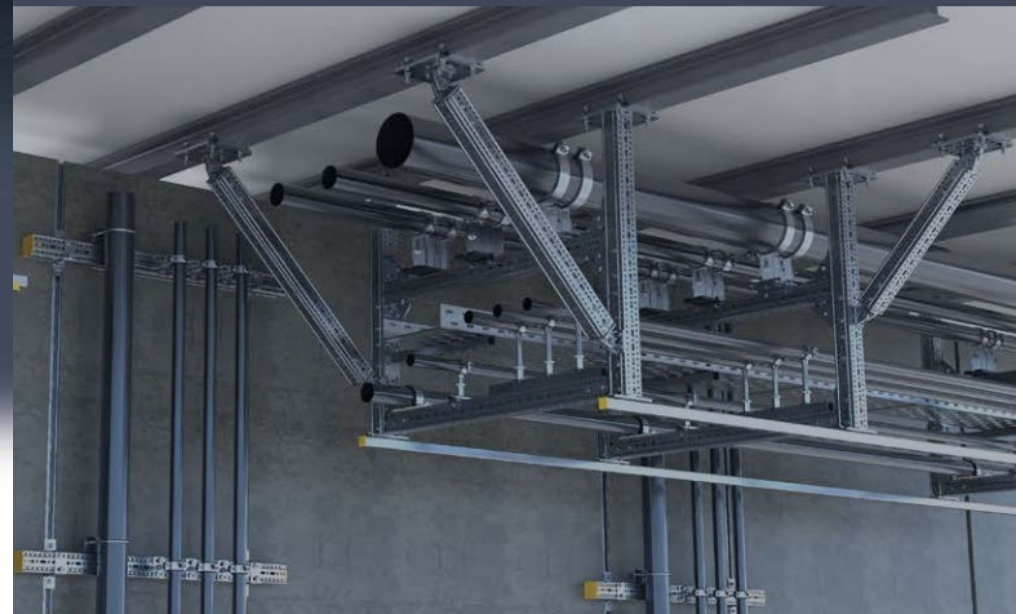
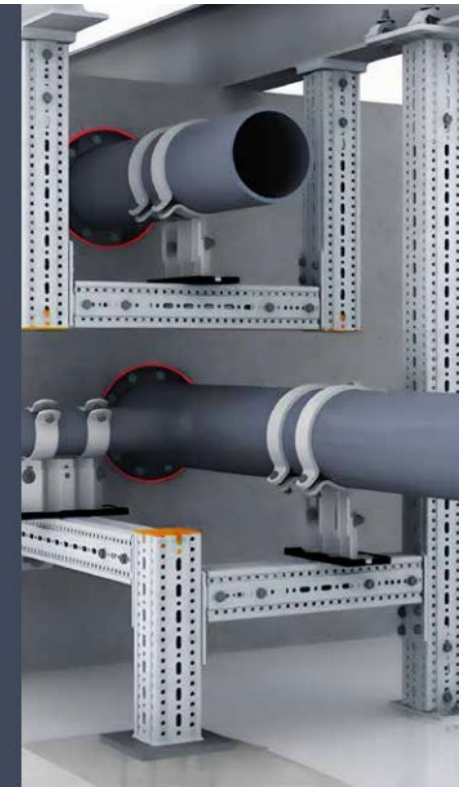


Why use a Modular Steelwork System for **Data Centres**

What if your secondary steel work could be ordered from the stock with no delivery time for the production phase?

What, if the support modules are so versatile that you may provide a part of the material on site even before the design freeze?

This could reduce Time-to-market dramatically.



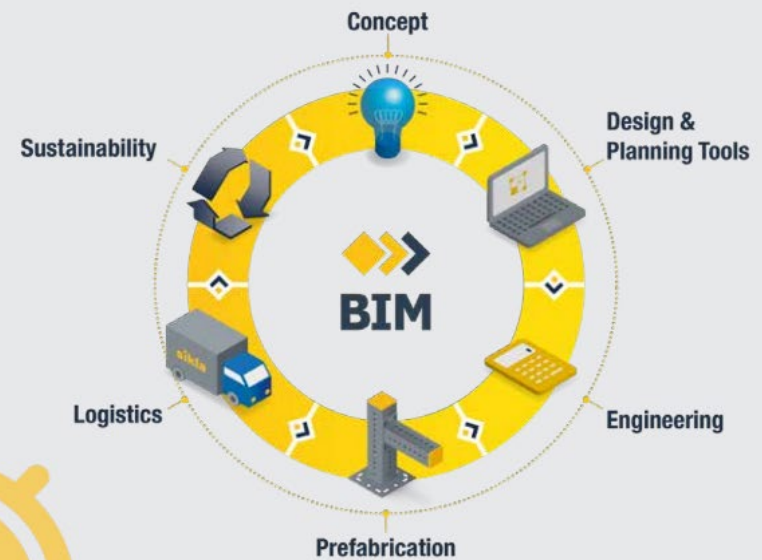
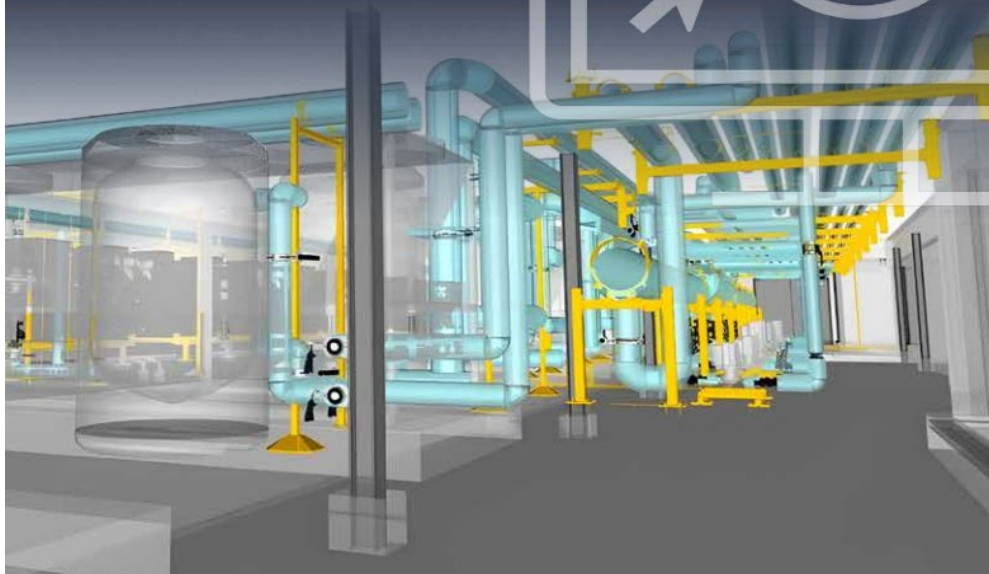
SOFTWARE AND ENGINEERING

Planning Secondary Steelwork for **Data Centers**

Our proven support concepts from various mega projects can be used and adapted for your project. Our software plugins are focussing on the very application and speed-up the planning phase. Material demand can be easily defined and even estimated beforehand to prepare the supply chain for mega projects.



Our plugins –
speed up the
planning



Data Centres
Software to reduce
planning time

Time-to-market

Modular steelwork can become one of the most important drivers to minimize your project time to build data centres.

- Software to reduce planning time
- Modular Steelwork System minimizes delivery time - right from the stock
- High availability, especially for mega-projects
- Service support for software, engineering, logistics and installation
- Proven concepts for supports – references for mega projects
- Fastest installation time on the market
- Flake-free. Whisker-free.
- CE approved / meets Eurocode 3 / ready for RStab
- One-screw technology

One-screw
technology

Modular Steelwork FOR DATA CENTRES

High
Speed

Green

Large
Scale

Modular

Little
space

Flake
Free



Beck